



REFRIGERATOR-FREEZER

Service Manual

Model: PRN2106MF



This product is for domestic use only

Use & care manual

Important safeguards

Refrigerator

Service Manual

Models: PRN2106MF

Features

- Energy efficiency
- Micro foam technology
- Low noise operation
- Thick insulation for energy efficiency
- Latest No. 2 micro-biological technology

CONTENT

CONTENT

1. Content.....	1
2. Product code illumination and Series Introduction...	2
3. Specifications.....	3
4. Safety precautions.....	4
5. Function Schedule.....	7
6. System Flow Chart.....	8
7. Circuit Diagram.....	9
8. Maintenance Service and Trouble Shooting.....	10
9. Exploded View.....	30
10. List of Parts.....	31

Specifications

Models	PRN2106MF
capacity (L)	590
Color	Silver
Power Supply (V/Hz)	115V/60Hz
Rated Input Power (W)	140
Power Consumption (kW·h/Y)	569.4
Net Weight (kg)	137
Gross Weight (kg)	148
Unit Dimension (D*W*H) (mm)	911x728.5x1775
Packing Dimension (D*W*H) (mm)	985x780x1840
Container Quantity 40'HQ (PCS)	48

Safety precautions

Safety precautions

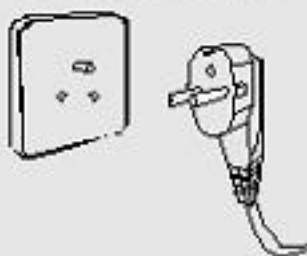
This appliance uses 220-240V~/50Hz AC for power supply.

Failure in operation and damage to the control panel, thermostat or the compressor will occur if voltage is outside the range 187-242V unless a regulator with a capacity of over 750W or higher is installed.



It is required to use separate, dedicated outlet with securely grounding.

The power cable of this appliance is fitted with three-core (grounding) plug complying with three-core (grounding) outlet. In no case, should the third plug pin (grounding) of the power cable be cut or removed.



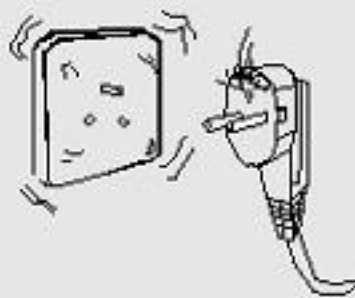
Do not damage power cable

- * Be sure not to pull out the plug of the appliance by drawing the power cable. Be sure to directly pull out it of the outlet by firmly grasping the plug.
- * Do not cause the appliance body press the power cable, nor should any people tread on it.
- * When moving the appliance from wall, be careful not to roll or damage power cable.



In case of damaged power cable

When the power cable or plug has been worn, it is prohibited to continue to use it. In this case, it is required to replace it by factory authorized service shop.



When there is leakage of inflammable gas:

- * Close the valve of leak ing gas
- * Open doors and windows
- * Neither try to drag nor insert any power plug for any electrical unit such as refrigerator



Please pull out power plug under the following situations:

- * Pull out power plug prior to cleaning or repairing
- * When replacing damaged lamp, it is required to pull out power plug to prevent electrical shock.



Safety precautions

It is absolutely prohibited to put inside the appliance hazardous inflammable or explosive articles, strong corrosive acid, alkali, etc.



Do not keep medicine, vaccine, or chemical reagent in the appliance. This refrigerator is for household use, which cannot store item with strict requirement for temperature.



Do not store or use gasoline or other flammable article in the vicinity of the refrigerator to avoid fire.



Do not place any electrical plugs, regulators or microwaves on top of the refrigerator. Do not use electric appliances (Except those allowed by manufacturer) inside the refrigerator.



Do not play by hanging on its door, to prevent tilting the door or toppling the refrigerator to hurt person.



Do not place heavy or unstable articles or water containers on top of the refrigerator.



Safety precautions

When the refrigerator has started running, take care not to touch the cold surface of the freezer compartment with hand, especially with wet hand. Otherwise, your skin is liable to be stuck on the cold surface.



Do not spray water onto the refrigerator, or place it in wet area susceptible to be splashed with water, so as to avoid influencing the electric insulation performance of the appliance.



It is strictly prohibited to privately dismantle or change the appliance. For the repair of refrigerator, it can be carried out by professional only.



Do not put the bottled beer or beverage in the freezer compartment to prevent frost crack.



At no power supply or when carrying out cleaning, it is required to pull out the power plug, and to wait at least 5 minutes for switching on it again to prevent damaging its compressor by continuous starting.



When the appliance is to be discarded, dismantle its door, as well as its door gasket to avoid accident occurred when a child goes inside for playing.



Function Schedule

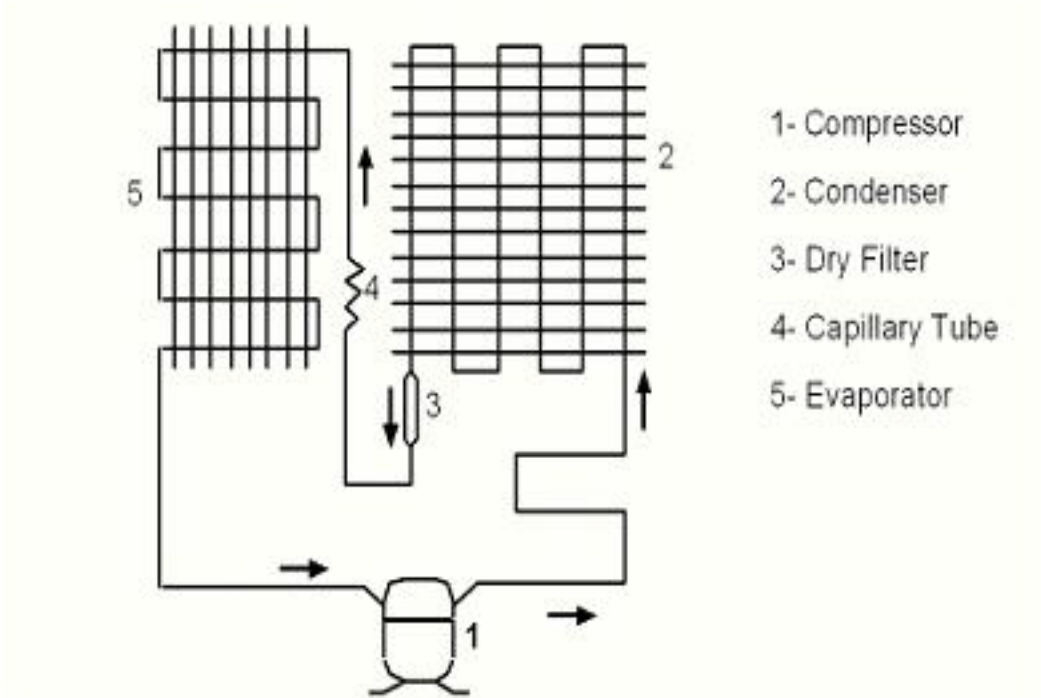
Function Schedule

- Energy efficiency
- Micro foam technology
- Low noise operation
- Thick insulation for energy efficiency

System Flow Chart

System Flow Chart

1 Schematic diagram of System Flow Chart



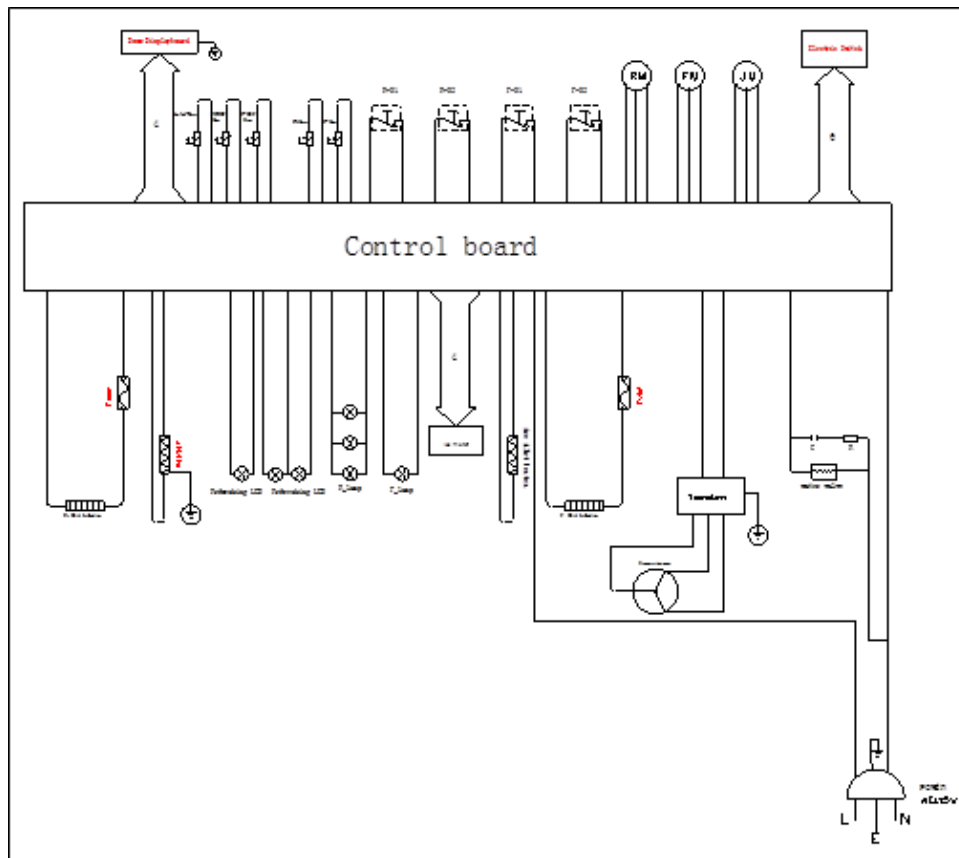
2 Brief Description of System Flow Chart

The refrigerant flows in the sequence: 1->2->3->4->5>1

Circuit Diagram

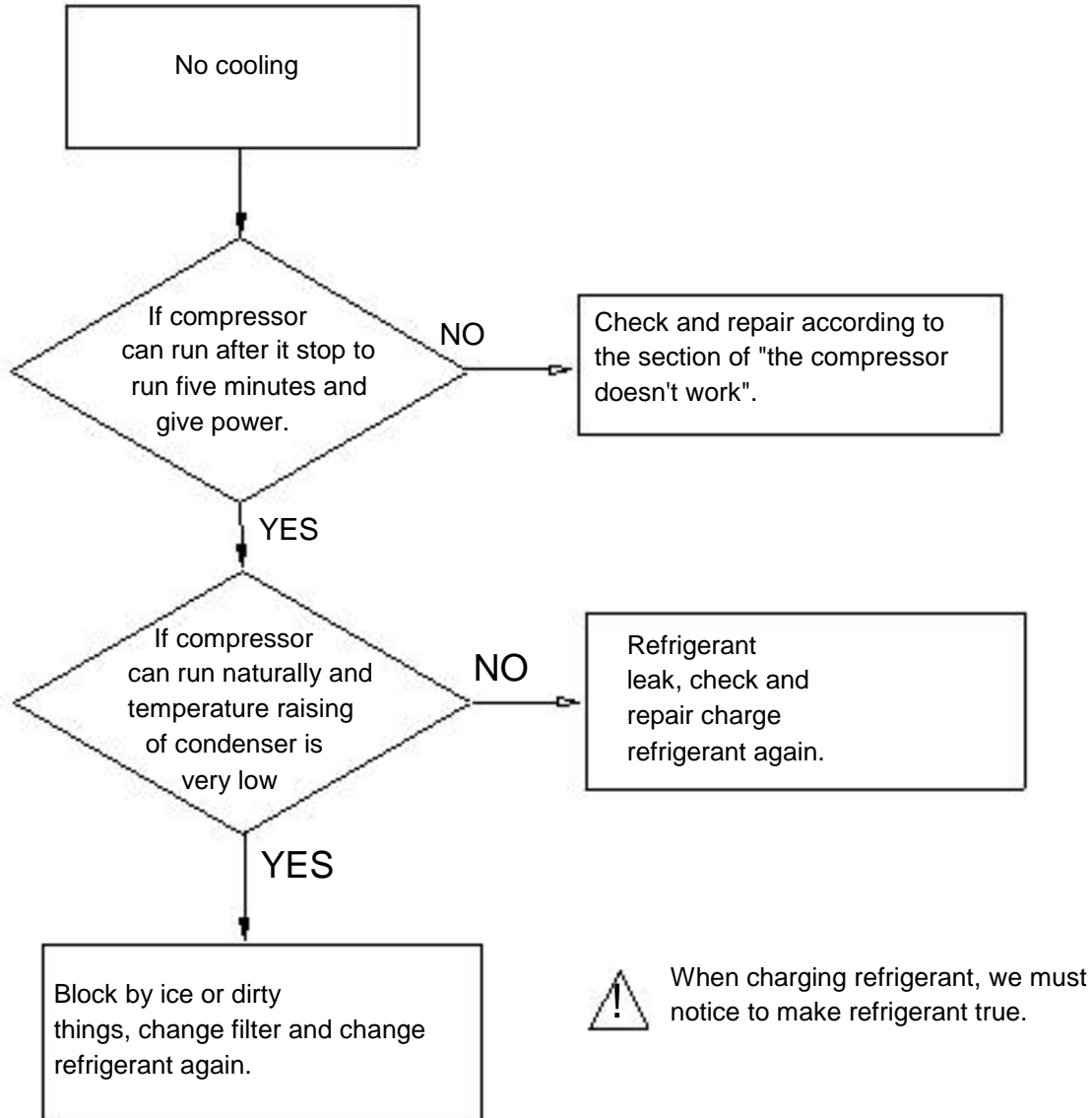
Circuit Diagram

1 Schematic Circuit Diagram

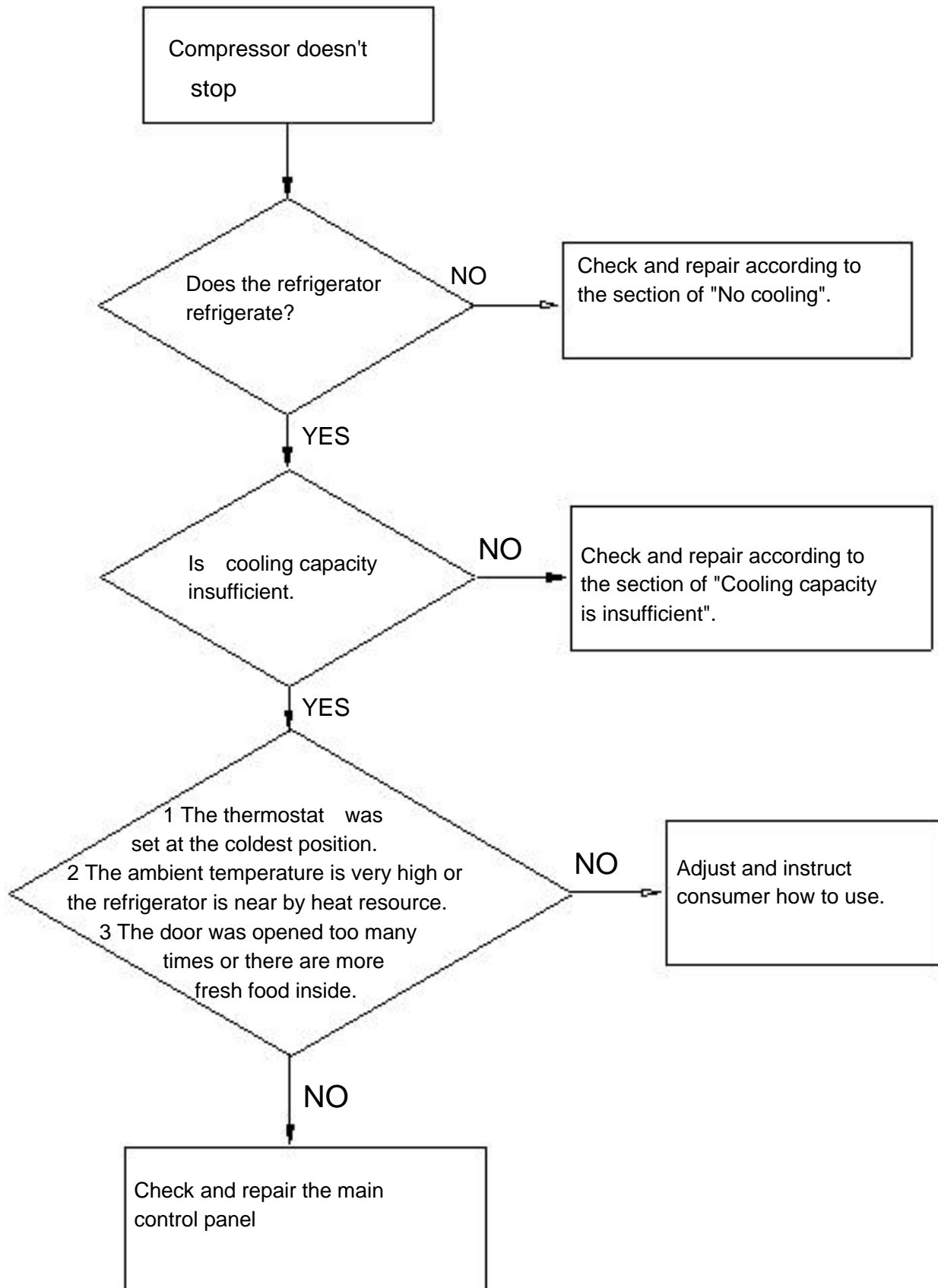


Maintenance Service and Trouble Shooting

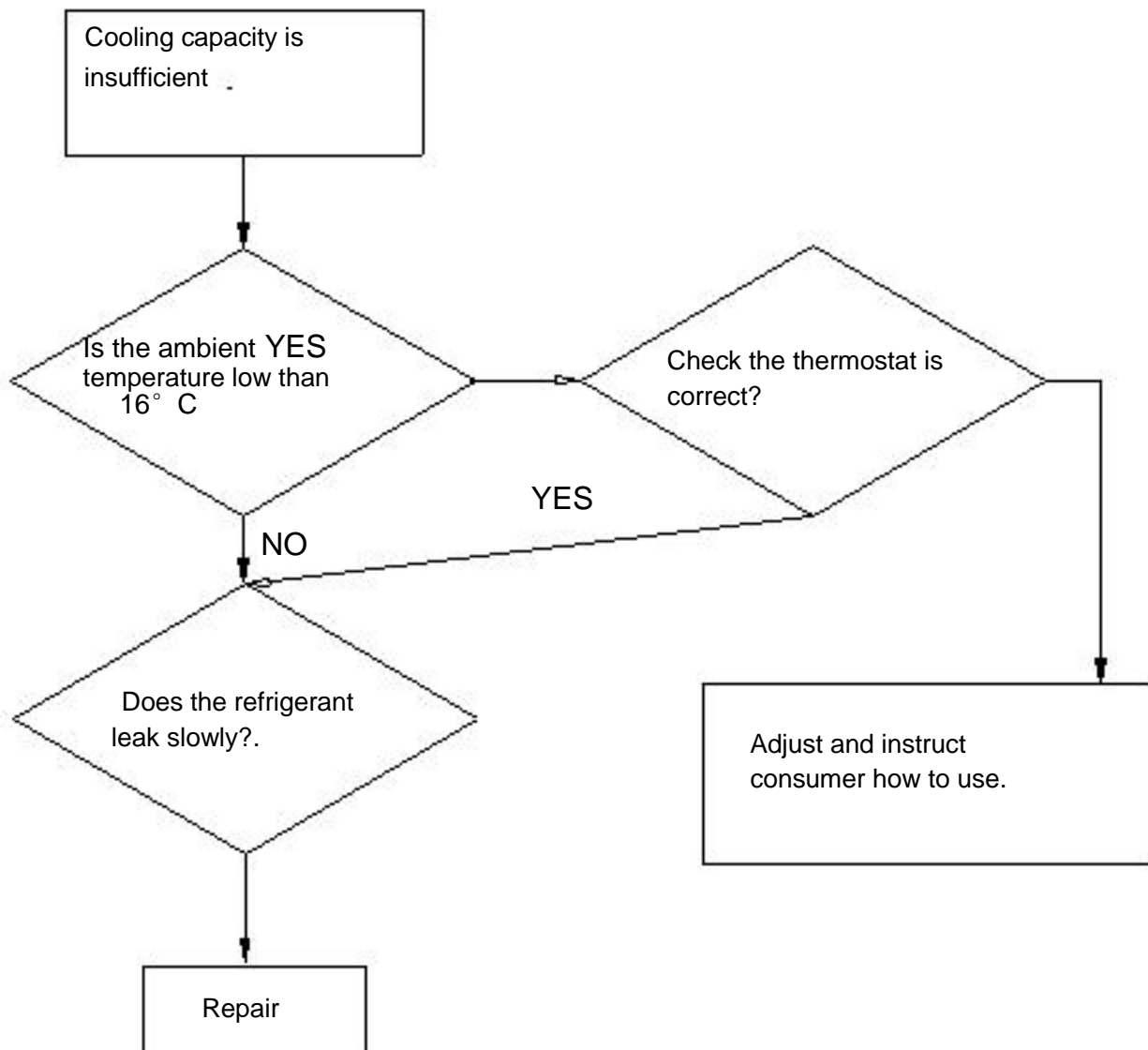
1. No cooling



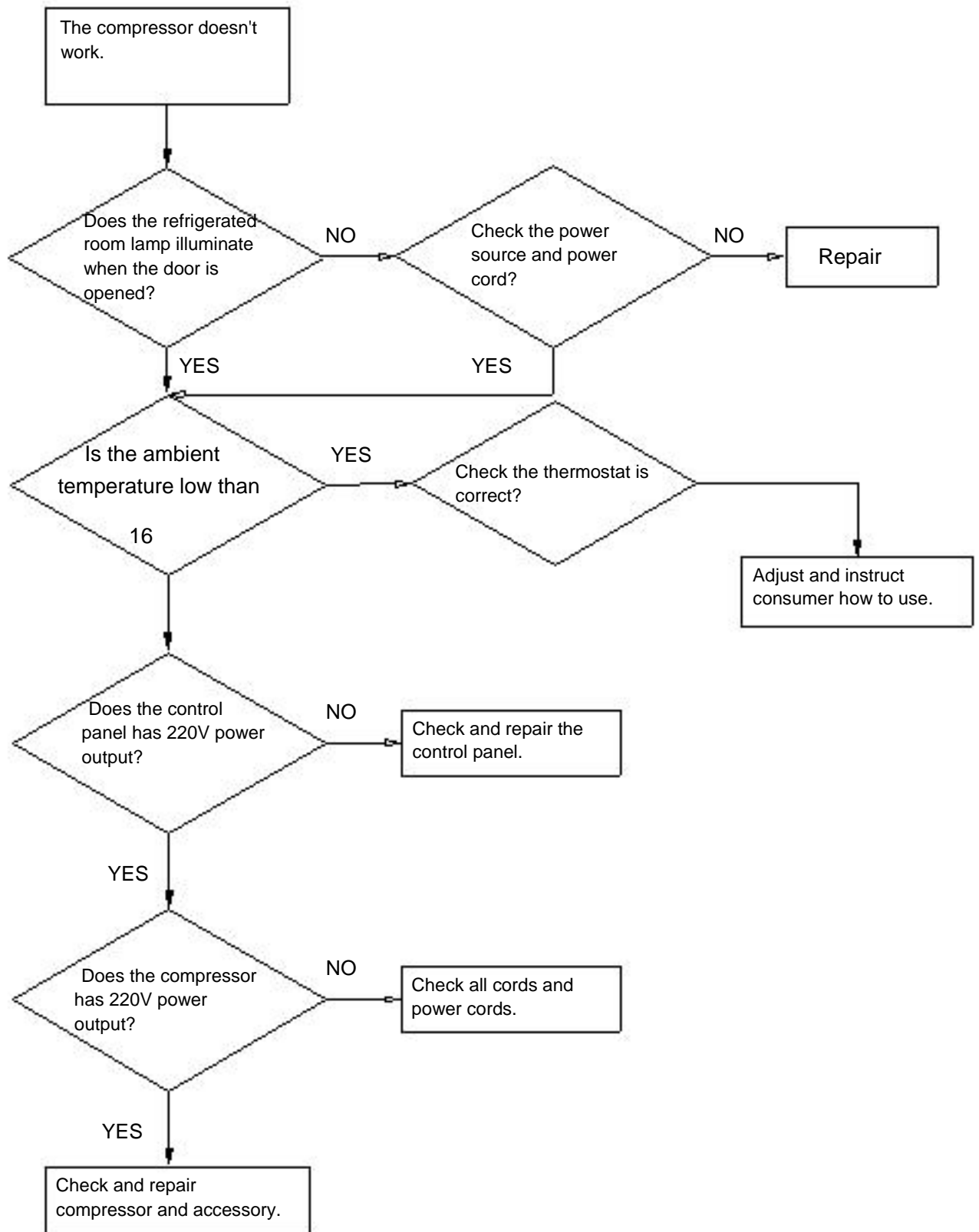
2 The compressor doesn't stop



3 Cooling capacity is insufficient



4 The compressor doesn't work



Maintenance Service and Trouble Shooting

5 Normal Phenomena—Not Troubles for Refrigerators

In a domestic refrigerator, there is not only a complicated electric control system, but also a refrigerating system that is difficult to discern whether it is in a good working condition. Both the systems are related and affect each other. If a certain part of a refrigerator works abnormally, its refrigerating efficiency will decrease, operation properties will become unstable, or even it cannot be used normally for those serious cases.

Refrigerators are generally of larger volume, once troubles appear, to send them to a service department is really a tough thing, if such is the case, the user will always be in suspense, sometimes, normal phenomena will be erroneously regarded as troubles. Therefore, before we deal with the topics of frequently occurring troubles of refrigerators and their remedies, we should firstly give a brief account of some normal phenomena which are not troubles. In case any one of such phenomena occurs, there is no need to worry about it, and the user can use it at total ease.

1). When the compressor of a refrigerator has just stopped running, a rumbling sound can be heard from inside its evaporator. This is a sound caused by the flowing of refrigerant in the evaporator tubing. Because the pressure difference is still greater after the compressor has just stopped running, the refrigerant will flow for a certain time, therefore, this sound is a normal phenomenon.

2). A click sound can often be heard from the refrigerator. This is a normal sound produced by the pull-in or release of the armature of a current deadweight start relay when starting the compressor. The compressor motor will produce a slight and uniform sound while it is running. This sound is not easy to be heard in the daytime, but of course it can be heard distinctly at night.

3). The compressor consists of an electric motor and a compressing apparatus. During its normal operation, the motor's stator core and windings will rise to a temperature in the range of 100°C ~ 110°C , and the temperature of the piston and cylinder of the compressing mechanism can also reach as above 100°C due to the heat produced when compressing refrigerant. Most of the heat radiates to the air through the compressor casing, therefore, its casing is generally at a temperature between 85°C ~ 90°C

, it is very hot, particularly in summer when the ambient temperature is higher. All these are normal phenomena.

4). For the direct cooling refrigerator, a kind of irregular crack sound can be often heard when the compressor is running for a certain period of time or has just stopped its running. This sound is caused by the stress relief due to expansion and contraction when temperature changes, and will not affect the normal application of refrigerator.

Maintenance Service and Trouble Shooting

6 Common Troubles in Refrigerators and Their Remedies

Causes for troubles occurring in refrigerators are closely related to the quality of components and workmanship in assembling by manufacturers as whether refrigerators are properly used and maintained. The parameters generally used to express the working conditions of a refrigerator include the temperature inside the refrigerator, operation rate, electric power consumption, noise level, and other functional indexes. If any one of these parameters is beyond its permissible range, this indicates that there is a fault or trouble in the refrigerator.

During the whole service life of a refrigerator, the probability of troubles occurring within a union time is called its failure rate. Making a comparison between the control circuit system of a refrigerator and its refrigerating system, we can find that the failure rate of the former is higher, and that of the thermostat is the highest. In troubleshooting, the first thing you must do is to determine where the trouble comes from --- the control system or the refrigerating system. There is general no trouble indicating instrument mounted on the domestic refrigerator, locations and natures of troubles should be determined according to their respective features, therefore, experience in servicing is very important to troubleshooting. Service technicians with rich experience can correctly locate them and take reasonable remedy measures based on their comprehensive analysis of trouble characteristics as well as operating conditions for various kinds of refrigerators.

Three Essentials for Checkup

1) Look

- a) Check the tubing of refrigerating system for cracks and various welding points for leaks; if leakage occurs, an oil stain can be seen definitely.
- b) Check the suction and exhaust pressure values (high pressure and low pressure) of compressor to see whether they are normal.
- c) Check the conditions of frost attached to its evaporator and gas return tube. It is abnormal if frost has formed on part of the evaporator or there is no frost attached to it.
- d) Pay attention to the speed of temperature drop inside freezer compartment. It is abnormal if the speed of temperature drop is obviously slower than the corresponding normal speed.
- e) Check the environment to see whether it is suitable for placing a refrigerator.
- f) Check refrigerator door seal, case, table surface and heat insulation layer.
- g) Look at the main control board to ascertain if various indication states are normal.

2) Listen

- a) Listen to the noises produced when the compressor is running

Maintenance Service and Trouble Shooting

Hums from a fully enclosed aggregate unit is the sound caused by overload indicating that the motor cannot be started normally ,meanwhile ,a clattering sound can be heard from inside the start relay ,which is produced because the start contacts cannot be released normally .A whistling sound is caused by the high pressure gas flowing out of the crack of the pressure tube inside the compressor ,and clucks are the sound of striking after the suspended spring inside the compressor has broken .

During the normal operation of compressor, a slight and uniform hum sound due to undulation of electric current can be heard generally ,this is a normal phenomenon .However ,if it sounds like "tong ,tong ...",i.e., an impact sound inside the compressor ,this means that a large quantity of wet vapor of refrigerant or refrigerating oil has come into the compressor cylinder ;if it sounds like "dang ,dang...", a striking sound of metal parts inside the compressor ,this means that some moving parts have loosened (note to differentiate this sound from those formed during starting or stopping the compressor).

b) Listen to the sound caused by the flowing of gas in the evaporator

Open the refrigerator door while the compressor is in operation, incline your ear and listen attentively the gas flow sound inside the evaporator .If it sounds like gentle whistling accompanied by a sound similar to water flowing ,this is the sound produced by the normal circulation of refrigerant within the evaporator .In case only the gas flowing sound can be heard and there is no water flowing sound ,this indicates that the refrigerant has already percolated .If neither the flowing sound nor the gas sounds from the evaporator can be heard ,this means that the filter or capillary has been clogged .

3)Touch and Feel

a) Feel the compressor when running ,its temperature should be generally less than 90° C in the normal state (it may exceed 90° C in case of running for a longer period of time).

b) After the compressor has operated normally for 5~10 minutes , touch and feel the condenser ,the temperature of its upper part should be higher than that of its lower part (or its right part is hotter than its left part ,depending on the type of condenser coil),this indicates that the refrigerant is circulating . If the condenser is not hot ,this means the leakage of refrigerant .In case the condenser radiates heat for only several minutes and then cools down ,this means that the filter and capillary have been clogged .As for the forced air cooling condenser ,hot air will be blown out of it ; this means that the system is out of order .

c) Feel the filter's temperature .During the normal operation of refrigerating system ,the temperature on the filter's surface should be a little higher than the ambient temperature ;if you touch it with your hand ,you will have a sense of slight heat .In case dew condensation appears due to the fact that its temperature is obviously lower than the

Maintenance Service and Trouble Shooting

ambient temperature ,this means that most meshes of its screen has been clogged ,resulting in an obstructed flowing of refrigerant ,thus causing a drop in temperature due to throttling .

d) Feel the temperature of exhaust gas from the refrigerating system .the exhaust gas should be very hot and this is the normal working state .For those refrigerator with enclosed type of compressor refrigerating system, no frost or dew drop will form on the gas suction tube ,otherwise ,there is something wrong in the system (Frosting and dew condensation may appear for a very short time period when just starting the machine ,this is a normal phenomenon).

Because a refrigerator is a combination of several components ,they are related and have influence on each other In case an abnormal phenomenon has been found through the above-mentioned checkups ,you need not to make a hasty conclusion based on only one abnormal phenomenon .It is advisable to find out two or more abnormal phenomenon ,or conduct troubleshooting comprehensively with the aid of instruments or other ways ,because several kinds of troubles may share a common abnormal phenomenon ,and two or more abnormal phenomena may occur simultaneously due to a certain trouble .With this method ,you can reject some suspicious troubles and finally make a correct judgment .

7 Analysis of Troubles and Troubleshooting

A. Poor Refrigerating Effect

The so-called "poor refrigerating effect " refers to the fact that the refrigerator can operate and refrigerator normally ,but the temperature in the refrigerator cannot drop to the prescribed value under the stipulated working conditions .In view of there are many causes for this phenomenon ,we are going to discuss and analyze it in the following 7 aspects :

1) Leakage of refrigerant

Analysis of Trouble

The leakage of refrigerant in the system will result in an insufficient refrigerating capacity ,the resulting phenomena are its lower gas suction pressure and exhaust pressure as well as higher exhaust gas temperature. The exhaust tube feels rather hot ,and a continuous gas flowing sound louder than usual can be heard at the outlet of the capillary ,and no frost or a smaller quantity of loose frost appears on the evaporator .After shut down ,the balance pressure in the system is usually lower than the saturation pressure corresponding to the same ambient temperature .

Remedy

In case there is leakage of refrigerant from the system ,do not hurry to recharge it with refrigerant ,manage to find out leak points immediately ,and make a note of from where it leaks ---welding points and parts .After having them repaired ,recharge refrigerant .

Maintenance Service and Trouble Shooting

There are so many joints and sealed surfaces in a refrigerator, accordingly, quite a lot of potential leak points do exist in the system. In troubleshooting, pay attention to those parts that are liable to leak, check main connection points for oil seepage and tubing for cracks. If there is no severer leak point, charge the system with nitrogen and detect leak points with the commonly adopted method, repair them, evacuate, charge the system with refrigerant, and then turn on the refrigerator to make a test run.

2) Too much refrigerant charged into the system

Analysis of Trouble

a) In case the amount of refrigerant charged into the system exceeds its nominal capacity, the superfluous refrigerant will of course take some space of the evaporator, thus reducing its heat-dissipation area and hence the refrigerating efficiency of the system. The abnormal phenomena caused by this reason are as follows: the gas suction and exhaust pressures are generally higher than their respective normal values, the temperature of its condenser is higher and the electric current of the compressor rises, loose frost forms on the evaporator, the refrigerator temperature drops slowly, and frost appears on the gas return tube.

b) In case excessive refrigerant has been charged, the liquid refrigerant that cannot evaporate in the evaporator will return to the compressor, and thus a phenomenon of "liquid striking" will occur. The liquid refrigerant evaporates and effervesces as soon as it flows into the refrigerating oil at the bottom of compressor. If the condition is severe, foams will fill all over inside the compressor housing and be sucked by the piston, causing damage to the components of compressor.

Remedy

According to the operating procedures, it is mandatory to turn the machine off, and several minutes later, open the refrigerant charging tube and let the refrigerant escape from it, replace the dry filter, recharge refrigerant after evacuating, and then seal the charging port.

3) There is air left in the refrigerating system

Analysis of Trouble

Residual air in the refrigerating system will reduce its refrigerating efficiency. The prominent phenomena are the increase in its gas suction and exhaust pressures (however, the gas exhaust pressure will not exceed its rated value), obvious increase in temperature in the segment from the compressor outlet to the condenser inlet. Because there is air in the system, both the gas exhaust pressure and temperature will rise, and moreover, the gas flowing sound is intermittent and obviously louder.

Remedy

After shut down for several minutes, open the tubing, evacuate it and then recharge the system with refrigerant.

4) Low efficiency of compressor

Maintenance Service and Trouble Shooting

Analysis of Trouble

Low efficiency of a refrigerating compressor refers to the actual reduction of gas discharge capacity, and hence the corresponding reduction of refrigerating capacity, under the condition that the refrigerant in the system is unchanged. This phenomenon occurs mostly when the compressor has been used for quite a long time, its moving parts have worn to a considerable degree, fit clearance between various parts have increased and sealing property of its gas valve has deteriorated, resulting in an decrease in its actual gas discharge capacity.

Methods of Judgment

Measure the high and low pressures with pressure gauges to see whether they are normal. If an abnormal sound comes from the compressor or the temperature of its causing is too high, Cut the discharge port open and operate the compressor, feel it if there is pressure at the discharge port with your finger (For a normal compressor, its discharge port is difficult to be blocked with your finger if you just apply a little effort).

5) Too thick frost layer formed on evaporator

Analysis of Trouble

If a direct cooling refrigerator is to be used for a prolonged period of time, be sure to defrost its evaporator regularly; if you fail to do so, the frost layer on the evaporator tubing will become thicker and thicker. Heat conduction will be severely affected when the whole tubing is wrapped with a transparent ice layer, and finally the temperature in the refrigerator cannot drop down to the prescribed range.

Remedy

Turn the refrigerator off, and make preparations for defrosting, open the refrigerator door to let the air come in, or use a fan to speed up air flowing so as to shorten the time needed for defrosting. Never strike the frost layer with any iron tools or wood stick in order to avoid damage to the evaporator tubing.

6) Refrigerating oil left in evaporator tubing

Analysis of Trouble

During the process of refrigerating cycles, a little refrigerating oil may remain in the evaporator tubing, and after a longer time of operation, if there is considerable refrigerating oil left in the evaporator, the heat conduction effect will be severely affected, thus causing a poor refrigerating effect.

Remedy

It is quite difficult to determine whether this trouble is caused by the refrigerating oil left in the evaporator tubing, because this kind of phenomenon and other several trouble are tends to be confused. Generally speaking, you can make a judgment based on the frost formed on the evaporator. If the frost does not cover the evaporator, and moreover, it is loosely formed, you can make a judgment that the deterioration of

refrigerating effect is due to the accumulation of refrigerating oil left in the evaporator tubing in case no other troubles have been found . To clear off refrigerating oil left in the evaporator ,dismantle the evaporator ,purge it thoroughly and then dry it .In case it is difficult to dismantle it ,charge refrigerant from the evaporator inlet to wash it several times ,then purge and dry it with nitrogen .

7) Flowing obstructed in refrigerating system

Analysis of Trouble

Because the refrigerating system was originally not purged thoroughly ,some of the filter screen meshes have been clogged by dirt accumulated in the filter after using it for a certain time of period ,thus resulting in a decrease in flow rate ,and hence a poorer refrigerating effect .

The abnormal phenomena caused by this kind of slight clogging in the system are as follows: the gas discharge pressure is lower ,the temperature of discharged gas drops down ,the position clogged has a temperature lower than that in normal conditions ,and for a severe clogging ,even dew condensation as frosting may appear .

Remedy

Purge the tubing , and after replacing the dry filter with a new one or clearing it thoroughly ,recharge the system with refrigerant and seal the charging port .

B. No Refrigerating

The phenomenon that the compressor runs normally , but no frost (or only a little frost) appears on the evaporator ,and the refrigerator temperature does not drop down is called "no refrigerating". There are many causes for this trouble and it is relatively complicated , too . In servicing ,special attention to finding direct causes for this phenomenon .Three main potential causes for this trouble are analyzed below :

1) All refrigerant in the system has leaked out

Analysis of Trouble

Leak points in the refrigerating system have not been found and repaired timely ,thus resulting in the total escape of refrigerant .There are two kinds of leakage :i) **slow leakage** for instance ,when we want to use a refrigerator that has been put out of quite a long time ,we find the leakage of refrigerant ,or in the course of its operation ,we have found that the refrigerator is gradually becoming not so cold and finally no refrigerating can be achieved ; ii) **fast leakage** in that case ,all the refrigerant will escape swiftly due to abrupt rupture of system tubing .

Symptoms of total leakage of refrigerant are mainly as follows : the compressor can be started easily (if there is no damage to the compressor parts) and its operating current becomes low ,its gas suction pressure is high and discharge pressure is lower ,the gas discharge tube feels rather cold ,no sound of gas eruption from the liquid in the evaporator can be

Maintenance Service and Trouble Shooting

heard ,and no will gush out of the process tube if you cut it open after shutdown .

Remedy

Check the whole machine , particularly those locations which are liable to leak .After leak points have been found ,repair them or replace them with new parts according to specific circumstances ,then evacuate the system and finally charge refrigerant.

2) Refrigerating system has been clogged

a) Clogged with Ice

Analysis of Trouble

The dryness treatment for the major parts in the refrigerating system has been performed improperly, the effect of air purging for the whole system is not good ,or the water content in the refrigerant is out of standard ,all these will cause the expansion valve to be clogged with ice .The symptom for this trouble are as follows :the refrigerator sometimes can refrigerate and sometimes cannot :the refrigerator compartment works normally at the beginning ,but after working for a certain period of time ,frosting begins at the clogged position ,evaporation temperature reaches below 0° C , water will accumulate at the narrow part of the capillary and clog it gradually ,then frost begins to melt at the evaporator ,no gas flowing sound can be heard ,and the gas suction pressure assumes a state of vacuum .Note that these phenomena will appear intermittently ; sometimes ,the refrigerator works well ,and sometimes not well .In order to determine whether it is clogged with ice ,heat the suspicious points with hot water to make ice melt ,and after a while if a gas flowing sound resulting from an abrupt gush is heard and the gas suction pressure rises as well ,it can be confirmed that the trouble is caused by ice clogging .

Remedy

If there is too much moisture in the refrigerating system, it is advisable to release the refrigerant, purge the tubing with nitrogen, and then charge the system with the filtered refrigerant. However, the commonly adopted method is to connect a filter with moisture absorbers (such as silica-gel, anhydrous calcium chloride) to the refrigerating system so as to filter out the moisture from the system, then replace the filter, evacuate it again and finally charge the system with refrigerant.

b) Clogged with dirt in capillary

Analysis of Trouble

The capillary inlet is a place where coarse-grained dirt or refrigerant oil in the system will tend to settle down and clog it. In case considerable dirt accumulates there, the whole filter screen may be blocked totally, making the refrigerant unable to go through. Clogging with dirt exhibits the same symptoms as that with ice, namely, higher gas suction pressure, lower temperature of discharged gas, and no gas flowing sound from the evaporator. The difference between the both is as follows: if the clogging is

Maintenance Service and Trouble Shooting

caused by dirt , tapping the suspicious clogged point (generally in the capillary or the connection joint of the filter) may cause the refrigerant to flow through partially, resulting in some corresponding change, whereas in that case if you heat it with a hot towel, no reaction will happen, no flowing sound can be heard, moreover, there is no periodic change. After rejecting the possibility of ice clogging, it can be generally considered as the clogging due to dirt .

Remedy

Dismantle the system, remove the dry filter from it, purge the tubing with nitrogen, install a new filter, then evacuate it and finally charge it with refrigerant.

C) Clogging in filter

Analysis of Trouble

Total clogging of a filter is rarely to occur. This trouble is mostly caused by the paste-like matter formed from the substances filled into the system or other dust after the refrigerator has been used for a longer time, or by the dirt accumulated gradually inside the filter. Sometimes, tapping the filter may cause a passage for flowing, Touching it with your hand, you will feel that it is cooler compared with its temperature in the normal state.

Remedy

The same as described in the capillary clogging with dirt.

3) Troubles of Compressor

a) Breakage of gas suction and discharge valve blocks

Analysis of Trouble

The compressor works by means of the opening and closing of gas suction valve and discharge valve to suck and discharge the refrigerant. If the valve block is broken, the refrigerant can not be discharged, and hence no refrigerating can be achieved.

Method for making judgment

It is quite difficult to differentiate this trouble from others because they often have similar symptoms. In repairing, firstly, hear attentively if there is some abnormal sound coming from the compressor (sometimes , the broken pieces of valve block may strike against the cylinder), and feel the compressor casing with your hand to ascertain whether it is too hot, this is also helpful to the troubleshooting; secondly, measure the pressures at the high and low pressure ports of the compressor with pressure gauges, if the gas suction valve block is broken, the suction pressure gauge pointer will swing violently and the suction pressure is very high, whereas when the gas discharge valve block is broken , the discharge pressure gauge pointer will swing drastically and the discharge pressure is very high. In the both cases, stop the compressor at once, and if technique is available, open the cylinder cover and check up the valve block, repair it, or replace it with a new one,

C. Sudden stop of Compressor during Its Running

Maintenance Service and Trouble Shooting

The cause of sudden stop of a compressor during its running is mostly that the gas suction pressure and/or discharge pressure exceed their respective prescribed ranges, thus making a pressure-operated protective relay shut off the power to the compressor and stop it. In the following we discuss mainly the reasons for causing excessively high gas discharge pressure and low suction pressure.

- 1) Stoppage due to excessively high gas discharge pressure
 - A) Too much refrigerant charged into the system

Analysis of Trouble

The phenomenon, such as loose frosting and poor refrigerating effect, may occur if excessive refrigerant has been charged into the system. Superfluous refrigerant will occupy a certain space of the evaporator, thus reduce its heat dissipating area, and the phenomenon of "liquid striking" may occur, too. Meanwhile, dew or frost condensation may occur on the gas return tube, and the gas discharge pressure will obviously rise, when it reaches the threshold value, the protective relay will actuate and shut off the power supply to the compressor.

Remedy

Open the tubing, re-evacuate and then charge the system with a proper quantity of refrigerant.

- b) Air left in the system

Analysis of Trouble

The residual air in the system will circulate together with the refrigerant in the system. The major symptoms caused by this residual air is higher gas discharge pressure, higher discharged gas temperature (the gas discharge tubing is considerably hot when you feel it with your hand), and poorer refrigerating effect. Furthermore, the gas discharge pressure will exceed its normal value when the compressor has run for a period not too long, thus making the protective relay actuate and bring to a stoppage.

Remedy

Check up how the air has been left in the refrigerating system. Generally, there are two possibilities: one is that the air has been sucked into the system when repairing due to carelessness, or it has not been purged out totally when evacuating the system; the other is that there are leak points at the low pressure end of the refrigerating system. Leak points appear mostly in those low temperature parts or assemblies, because the evaporation temperature is lower for such low temperature devices, especially at the low pressure end, it is easier for the air goes into the system. Once it has been ascertained that air does exist in the system, you have to open the tubing, re-evacuate it and then charge it with refrigerant.

- 2) Stoppage due to electric troubles
 - a) Thermostat is out of control

Analysis of Trouble

In case the thermostat does not work in its good order or its

Maintenance Service and Trouble Shooting

temperature sensor has not been installed properly, frequent stoppage is also likely to occur.

Remedy

Try to adjust the temperature sensor's position until the compressor can be started and stopped normally. If this cannot be achieved, and the stoppage still occurs repeatedly, it is most likely that the mechanical parts or contacts are out of order, disassemble the thermostat, make a thorough checkup and repair it.

b) Overload of electric motor

Analysis of Trouble

Probably, too many things have been put into the refrigerator, and hence the thermal load exceeds its refrigerating capacity ; or in case the power supply voltage drops considerably, the current flowing through the motor will increase drastically making the thermal protector actuate and the fuse blown , and hence the motor stops running. If the motor is still running continuously in such a case , its windings will be burned out .

Remedy

Reduce the thermal load, pay attention to the variation in voltage of the power supply.

c) Abnormal thermal protection

Analysis of Trouble

The compressor current is within its normal range, but the thermal protector actuates repeatedly.

Remedy

Replace the thermal protector with a new one.

3) Sudden stoppage due to other causes

Normal Stoppage

Start and stop of the compressor is generally controlled by a thermostat . When the temperature in the refrigerator reaches its desired value, the thermostat will shut down the compressor automatically. Never take this normal operation as a trouble, care should be taken to differentiate it from other real troubles in servicing.

D. Compressor won 't start

In case the compressor cannot be started, you must find out the origins of this trouble through checkup step by step, because probably there are many causes, including those electrical and mechanical.

1) Inspect the power supply to see whether it is connected to the compressor circuit.

Analysis of Trouble

In case the compressor cannot be started, this will generally exhibit in the power supply circuit, for instance, power failure, poor contact of switch, and blown fuse. Make a comprehensive analysis of these phenomena, fine out its real cause and take correct measures to remove this trouble.

Remedy

Maintenance Service and Trouble Shooting

a) Check the input power circuit to see whether where is voltage of the power supply, namely, the circuit which is connected to the knife switch. This can be determined with an avometer or a test pencil. If a blown fuse is found, ascertain and remove its cause, then replace it with a new one of the same specifications.

b) Check the compressor accessories, including its thermal protector and relay. In case the thermal protector is damaged, the compressor cannot be powered on. If the relay is out of order, the motor will not run and hum sound can be heard from it after the compressor is turned on, in that case, shut it down immediately, otherwise, the motor windings will be burned out in case this condition lasts longer.

c) Check the relay contacts and plugs to see if they are perfect and work reliably. Poor contact may cause the motor not running or humming.

2) Check the circuit voltage to see whether it is normal.

Analysis of trouble

If the circuit voltage is obviously lower than its rated value, it will be difficult to start the motor, and a hum sound can be heard from it.

Remedy

Measure the voltage with a voltmeter, if it is really too low, give directions to the user for buying a stabilizer so as to step up the voltage, thus normal operation can be achieved.

3) Check the thermal relay to see whether its contacts are closed.

Analysis of Trouble

The contacts of thermal relay sometimes may be open due to the leakage of temperature sensing agent from the temperature sensor.

Remedy

Remove the relay cover to check up its contacts, if they are open, this means that the original setting is not properly set or temperature sensing agent has leaked out of the temperature sensor. Try to turn the adjusting stem of this value in the direction of the lower temperature graduation, then check the contacts to see whether they are closed. If they are still not closed, dismantle the temperature sensing disc and then immerse it into warm water to see whether the contacts actuate, if not, it can be preliminarily determine that temperature sensing agent has leaked out, and it must be replaced with a new thermostat.

4) Motor troubles and other electric faults

a) Motor windings have been burned or short-circuited between turns

Analysis of Trouble

When motor windings have been burned or short-circuited between turns, the fuse will be blown repeatedly, and the blowout occurs particularly at the instant when you close the knife switch.

Remedy

Check the terminals and the outer casing to see whether they are short-circuited, and measure the resistance of each phase with an

Maintenance Service and Trouble Shooting

avometer. If short circuit occurs or the resistance of a certain phase is low, this means that short circuit does exist in the windings and/or between turns, and insulation layers have been burned or deteriorated. A megameter can be used in this inspection, too. If the insulation resistance is lower than $2\text{ M}\Omega$, this means that the insulation layer is already breakdown. If the motor has been burned, repair it or replaced it with a new one.

b) Fault of control relay

Analysis of Trouble

Overheat, burnout or wear of control relay contacts may occur generally. All these will cause poor contact in electricity.

Remedy

Dismantle it to repair, or replace it with a new one.

c) Poor electric contactor in thermostat

Analysis of Trouble

Burnout of contactor and leakage of temperature sensing agent may occur generally.

Remedy

Replace the old with a new one.

d) Check the terminals for loose connection and electric circuits for other abnormal phenomena.

5) Mechanical faults of compressor

a) Seizing of shaft

This phenomenon is caused mostly by poor lubrication, such as insufficient quantity of lubricant, clogging in the lubricant oil line, or intermittent lubricant oil supply. Dirt and other impurities in the lubricant oil will increase its viscosity and cause the shaft to be seized. Copper plating may also result in seizing of shaft.

b) Seizing of piston

This is caused by too small fit clearance between the piston and cylinder or expansion due to heat.

Judgment of seizing shaft and piston: After the refrigerator has been powered on, the compressor will not start and run, but a slight hum sound can be heard, and several seconds later, thermal protective relay will actuate and make the contacts open; this process will occur repeatedly, but the compressor cannot be started.

E. Compressor won't stop

Sometimes, the compressor will run continuously (for several hours or run without end), If the food placed in the refrigerator is not too much, there may be the following two situations: i) the refrigerator very low, this means that the control system is probably out of order; ii) the control system works normally, and there are troubles in the refrigerating system or other parts.

1) Temperature is set improperly

a) The temperature control knob is set to the "coldest" position. This

Maintenance Service and Trouble Shooting

position is to be used for fast freezing or continuous running, its temperature for power off is too low, therefore, the compressor won't stop and the temperature in the refrigerator becomes lower and lower .

b) Inspection method: check the temperature control knob to see whether it is set in the position "coldest".

2) Thermostat is malfunctioning and makes the compressor running continuously

Analysis of Trouble

When the thermostat doesn't work normally, it will make the compressor run continuously, and hence very low temperature will be achieved in the refrigerator. The fault is generally due to the fact that the contacts of the thermostat cannot be released.

Remedy

Dismantle the thermostat and make a through checkup, if it is totally out of functioning, replace it with a new one.

3) evaporation temperature is too high in refrigerating system, resulting in lower refrigerating capacity and hence continuous running of compressor

Analysis of Trouble

Leakage of refrigerant and clogging in a refrigerating system will directly affect its refrigerating capacity. Due to the reduction in its refrigerating capacity, the refrigerator temperature cannot reach its rated value, the thermostat won't work, thus the compressor runs continuously. When the evaporation temperature in the system is too high, the temperature sensing agent in the temperature sensor is also hotter, therefore, the thermostat is unable to cut off the power supply to the compressor and stop it.

Remedy

If it has been found that the refrigerant in the system is insufficient in quantity, recharge it with refrigerant. In case clogging occurs, disassemble the part where it is blocked. If the evaporation temperature is too high, settle this problem with an appropriate quantity of refrigerant.

4) No stoppage of compressor due to damaged heat-insulation layer inside case body and/or door seal

Analysis of Trouble

When the heat-insulation layer inside the case body deteriorates or the door seal is not closely touches the door frame, the temperature in the refrigerator will rise and makes the compressor running continuously.

Remedy

Check the heat-insulation layer for its damaged parts, repair it to improve its heat-insulation property. If the door has deformed or the door seal is not tightly sealed against the case body, repair them, respectively.

5) Too much food is placed in the refrigerator, or is placed too densely, resulting in poor ventilation or poor conditions for temperature sensing, and hence no stoppage of the compressor.

6) Too high ambient temperature, poorer ventilation and heat

Maintenance Service and Trouble Shooting

dissipation make the compressor running without stop.

F. Electric leakage of refrigerator

1) Slight electric leakage

Electric insulation has deteriorated due to being affected with damp, thus resulting in slight electric leakage.

2) Serious electric leakage

Refrigerator case has become live due to faults occurred in some electric devices or the erroneous wiring in installing power cord plug or outlet by the user. This is very dangerous.

3) Electric leakage test

a) Slight electric leakage

A tingle sense will be experienced as soon as you touch the metal parts of the refrigerator with your hand .When you test them with a test pencil ,its neon lamp will come on .In that case ,the first thing you need to do is to determine whether the grounding is perfect .If the grounding is no problem ,turn off the refrigerator immediately ,then check the insulation of electric circuits with an avometer .

b) Serious electric leakage

Never touch the case body of the refrigerator ,its door handle or other metal parts with your hand .Test the refrigerator with a test pencil ,it will light up intensively ;measure the resistance between the power cord plug and the case body with an avometer ,the reading will be zero (0Ω); in the worst case ,the fuse will be blown .Check the 3-prong outlet to see whether the live wire and the null line are inversely connected ,this makes the ground protection lead-out from the power cord plug being connected to the live wire .Another possibility is that the live wire and null line of the outdoor power supply circuit have been inversely connected accordingly ,this makes the null line become a live wire .

G .Stronger vibration and loader noise

1) Refrigerator placed improperly

a) Uneven ground

Uneven ground will cause there refrigerator to be placed unsteadily ,causing stronger vibration and noise during its operation .

b) Leveling screws not properly adjusted

If the leveling screws on refrigerator legs have not been adjusted properly ,vibration and noise will still occur even if the refrigerator has been placed on a level ground .

2) Abnormal noise from compressor

Three suspended spring inside the compressor case are out of balance ,and strike against the case ,moreover ,the wear of compressor parts may cause noise sometimes .

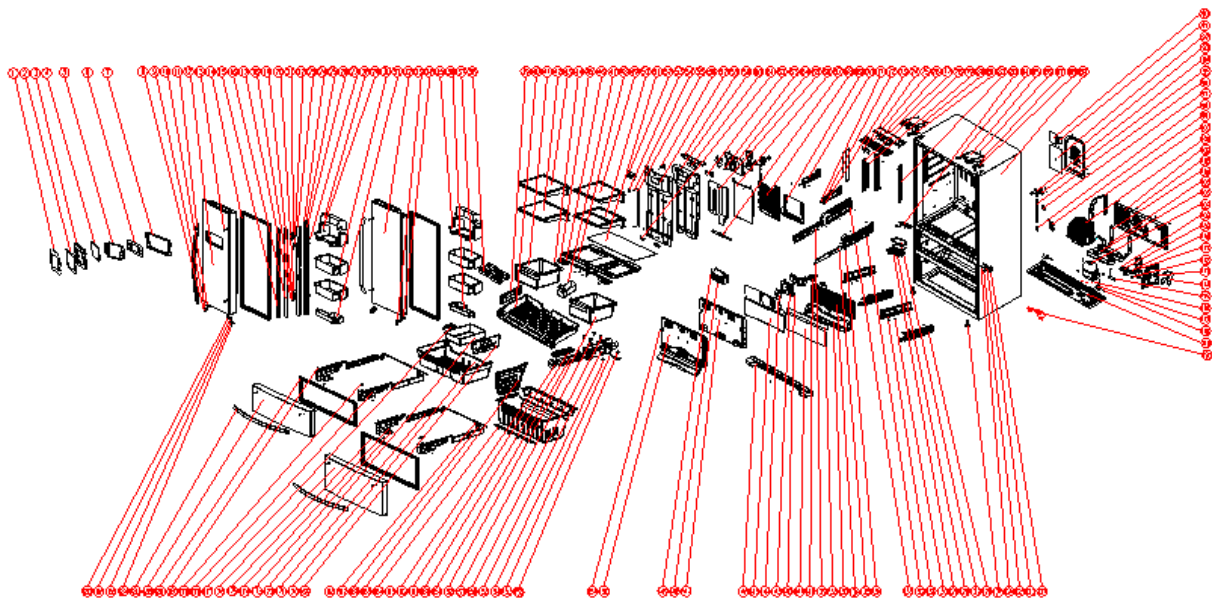
3) Resonance of tubing and loosening of parts

Improper and compact laying of tubes or the loosening of parts may cause vibration and noise .

Maintenance Service and Trouble Shooting

4) Inspection method

To find the sources of noise, press the vibration spot with your hand while the refrigerator is in operation and listen attentively whether the vibration becomes weak or vanishes. If the refrigerator has not been levelly placed ,put a level meter on its top table and adjust the leveling screws on its legs .In case noise occurs from the compressor ,strike different locations on the side surface of its case using a rubber hammer or hand hammer with a wood block in-between so as to determine whether the suspended springs are out of balance or being seized .



PRN2106MF exploded view

item	Image number	Material number	Chinese name	English name	remark
1	50290801001L	50290801001L	显控面板组件	display and control panel assembly	
1.1	50125901000A	50125901000A	显控面板	display and control panel	
1.2	50050121000T	50050121000T	双面胶带	double sided tape	
1.3	501159010005	501159010005	显控装饰板	display control decoration	
1.4	50050121000S	50050121000S	双面胶带	double sided tape	
1.5	501159010006	501159010006	显控板装饰框	display control PCB decorative frame	
1.6	M7G7-393	/	亚克力板	/	
7	M7G7-395	501157010138	显控板安装盒	display control PCB mounting-box	
8	/	502500200067	十字槽扁圆头自攻螺钉	screw	
9	M7G7-338	501157010130	磁铁固定盒	/	
10	M7G7-335	502999900062	磁铁	/	
11	M7G7-318	502908010022	冷藏拉手组件	R door handle	
12	N26T-301	5037001145B3	冷藏左门体预装	R door assembly L	
13	M7G7-319	501255710001	把手固定螺栓	handle fixed bolt	
14	M7G7-303	501157010115	冷藏门封组件	R door seal	
15	M7G7-328	501257010002	翻转梁盖板	vertical iron cove	
16	502411010008	502411010008	补偿加热器	compensation heater	

17	M7G7-331	501604000052	扭簧轴套	torsion spring sleeve
18	M7G7-333	501157010068	翻转梁下转轴罩	vertical iron bottom axis cover
19	M7G7-336	501157010116	翻转梁下转轴	vertical iron bottom axis
20	M7G7-339	502908000135	扭簧	torsion spring
21	M7G7-329	501157010093	翻转梁上转轴	vertical iron upper axis
22	M7G7-332	501157010067	翻转梁转轴上罩	vertical iron upper axis cover
23	M7G7-326	502202010008	翻转梁泡沫	vertical iron foam
24	M7G7-330	501157010042	翻转梁滑道加强件	vertical iron slide reinforce part
25	/	502500100061	十字槽盘头自攻螺钉	screw
26	M7G7-325	501157010092	翻转梁本体	vertical iron plastic part
27	/	502500200067	十字槽扁圆头自攻螺钉	screw
28	M7G7-1D6	501157610002	翻盖	flip
29	M7G7-1D5	501157010030	左黄油盒本体	left dairy
30	M7G7-1D7	501157610003	左加仑瓶托	large tray
31	M7G7-1D8	501157010031	左异形瓶托	small tray
32	MAH6-341	5037001145B4	冷藏右门体总成	R door assembly R
33	M7G7-352	501157010066	关门止档-右	right door close stopper
34	M7G7-351	501257010012	开门止档-右	right door open stopper
35	M7G7-1E1	501157010032	右黄油盒本体	right dairy
36	M7G7-1E4	501157010044	右异形瓶托	small tray
37	M7G7-1E3	501157610001	右加仑瓶托	large tray
38	M7G7-1E5	501157010045	异形蛋架	egg tray
39	M7G7-185	501157010096	变温抽屉分隔板	drawer partition
40	M7G7-181	501157010113	全宽变温抽屉组件	VTC drawer
41	M7G7-1A3	501157610010	左果菜盒组件	left crisper assembly
42	M7G7-1C0	50360201027C	悬臂左玻璃搁架	left leakproof glass shelf
43	M7G7-1C3	50360201027B	悬臂右玻璃搁架	right leakproof glass shelf
44	M7G7-198	501157010039	果菜盒调湿板	crisper humidity controlling panel
45	M7G7-199	501157010040	调湿板卡板	humidity controlling panel clamp
46	M7G7-190	500757010011	果菜盒盖板加强铁	crisper cover reinforce iron
47	/	/	水箱组件	/
	501157610011	501157610011	小抽屉	drawer body
	M7G7-1B3	501157610008	抽屉把手	drawer handle
48	M7G7-196	501157010131	果菜盒盖板	crisper cover
49	M7G7-1C3	50360201027B	悬臂右玻璃搁架	right leakproof glass shelf

50	M7G7-1G2	50360201027D	折叠悬臂搁架	leakproof fold cantilever shelf assembly
51	M7G7-1A2	50360301000A	果菜盒搁架玻璃	vegetable basket glass shelf assemb
52	M7G7-603	501157010118	冷藏风道盖板装饰件	R duct cover decoration
53	M7G7-121	501157010027	冷藏螺钉盖	R screw cover
54	/	502500100050	十字盘头自攻螺钉	screw
55	M7G7-120	501257010004	悬臂搁架中支撑铁	cantilever shelf middle bracket
56	M7G7-518	502403000436	冷藏室温度传感器	R sensor harness
57	M7G7-602	501157010107	冷藏风道盖板	R duct cover
58	M7G7-610	502101000268	冷藏风道闭孔海绵	sponge tape
59	M7G7-605	502201010016	冷藏风道主泡沫	R duct foam
60	M7G7-607	502201010013	冷藏风道泡沫左盖	R duct foam left cove
61	M7G7-604	501157010048	UV 保鲜灯罩	UV fresh lamp cover
62	M7G7-608	502201010015	冷藏风道泡沫右盖	R duct foam right cover
63	/	502500200067	十字槽扁圆头自攻螺钉	screw
64	M7G7-620	501157010018	冷藏风机支架	R fan motor bracket
65	M7G7-606	502201010014	冷藏风道泡沫主盖	R duct foam cover
66	M7G7-618	502904010078	蒸发器前盖	evaprator front cover
67	50241001000A	50241001000A	保鲜灯	LED lamp
68	M7G7-412	501757010001	冷藏室翅片蒸发器组件	R finned tube evaporator assembly
69	M7G7-119	/	冷藏接水盘	/
70	M7G7-142	501157010008	果菜盒盖板左支撑	crisper shelf left bracket
71	M7G7-144	502799900041	果菜盒缓冲垫	crisper cushion
72	M7G7-146	501157010009	果菜盒盖板右支撑	crisper shelf right bracket
73	M7G7-143	501157010026	果菜盒滚轮	crisper wheel
74	M7G7-155	501157010127	翻转梁导向座	vertical iron guide base
75	M7G7-157	501157010012	冷藏顶灯罩	R upper lamp cover
76	M7G7-534	502301000076	冷藏上 LED 灯	R upper LED PCB
77	M7G7-156	502409000105	冷藏顶灯座	R upper lamp socket
78	M7G7-158	501157010013	冷藏侧灯罩	R side lamp cover
79	M7G7-535	502410000100	冷藏侧 LED 灯	R side LED PCB

80	M7G7-166	501157010062	左顶铰链盖	hinge cover	
81	M7G7-164	502905010207	左顶铰链	top hinge	
82	M7G7-122	501257010001	悬臂搁架侧支撑铁	cantilever shelf side bracket	
83	M7G7-162	502905000054	左中铰链	mid hinge R	
84	M7G7-505	502408000110	冷藏门开关	R lamp cover	
85	M7G7-165	501157010063	右顶铰链盖	hinge cover	
86	/	502500200067	十字槽扁圆头自攻螺钉	screw	
87	/	502500300075	十字槽六角加边螺钉	screw	
88	M7G7-163	502905010208	右顶铰链	top hinge	
89	M7G7-201	503705011212	箱体总成	cabinet assembly	
90	/	/	变频板	/	
91	502421010001	502421010001	电源滤波器	EMI filter	
92	50230101003G	50230101003G	主控板	main control PCB	
93	M7G7-117	500757010009	主控板盖	main controller mounting-box cover	
94	50279991000B	50279991000B	进水管接头	inlet connector	
95	501259010001	501259010001	进水管接头盖	inlet connector cover	
96	501152810015	501152810015	软管	flexible tube	
97	501159010004	501159010004	水管固定夹	tube clamp	
98	50115281001B	50115281001B	快速转换接头	quick fitting	
99	502417010008	502417010008	水阀	water valve	
100	/	/	密封泡沫	/	
101	M7G7-406	501757010003	冷凝器蒸发盘组件	condenser vapurator plate assembly	
102	M7G7-180	500757010007	压缩机后盖	compressor chamber cover	
103	/	502500200067	十字槽圆头自攻螺钉	screw	
104	M7G7-115	501157010006	排水连接管	drain tube	
105	M7G7-116	502799900045	排水管封闭接头	drain tube connector	
106	M7G7-112	501157010101	蒸发盘	/	
107	YSJ-3068	501441100046	压缩机组件	compressor	
108	M7G7-615	502799900038	风机后减振垫	pad	
109	M7G7-504	502404000147	冷凝风扇电机	C fan motor	
110	M7G7-614	502799900039	风机前减振垫	pad	
111	M7G7-616	501157010025	风机盒	fan motor box	
112	M7G7-613	502799900040	风机侧减振垫	pad	
113	M7G7-113	501157010103	冷凝电机支架	cooling fan motor bracket	
114	M7G7-612	501160010001	冷凝风扇叶	fan blades	
115	GLQ-0006	501602000037	干燥过滤器	filter	
116	/	/	压缩机垫套	/	
117	M7G7-105	501157010102	后脚滚轮	back foot wheel	

118	MA00-1C4	500755810005	脚轮轴	/	
119	M7G7-104	500757010013	压缩机底板	compressor mounting panel	
120	50240101000C	50240101000C	美式电源线	American power cable	
121	/	502500200034	十字槽沉头不锈钢自攻螺丝	screw	
122	M7G7-159	502905000055	右中铰链组件	middle hinge	
123	M7G7-161	501157010057	中轴套	shaft sleeve	
124	/	502500100058	十字槽盘头带肩锁紧螺钉	screw	
125	M7G7-260	501157010105	调节脚	adjustable foot	
126	M7G7-172	501157010078	冷冻滑轨右支撑	F slide left bracket	
127	M7G7-177	502409000106	冷冻灯座	F lamp socket	
128	M7G7-537	502410000099	冷冻LED灯	F LED PCB	
129	M7G7-178	501157010011	冷冻灯罩	F lamp cover	
130	/	502500200067	十字槽扁圆头自攻螺钉	screw	
131	M7G7-171	501157010074	冷冻滑轨左支撑	F slide left bracket	
132	M7G7-151	501157010028	变温抽屉右支撑	drawer right bracket	
133	M7G7-148	501157010029	变温抽屉左支撑	drawer left bracket	
134	MAH6-154	502099911573	变温室控制面贴	control sticker	
135	M7G7-152-2	501257010033	变温抽屉右滑轨	drawer slide	
136	M7G7-414	501557010001	冷冻室翅片蒸发器组件	F finned tube evaporator assembly	
137	M7G7-170	/	冷冻接水盘	/	
138	M7G7-638	500501200192	冷冻风道隔热小海绵铝箔	aluminum foil tape	
139	M7G7-152-1	501757010002	变温抽屉左滑轨	drawer slide	
140	M7G7-503	502404000148	冷冻室风扇电机	F fan motor	
141	M7G7-637	500501200191	冷冻风道隔热大海绵铝箔	aluminum foil tape	
142	/	502500200067	十字槽扁圆头自攻螺钉	screw	
143	M7G7-639	501157010034	冷冻电机支架	bracket	
144	M7G7-611	501157010089	冷藏风扇叶	F fan blades	
145	M7G7-636	500757010001	冷冻风道隔板	separated plate	
146	M7G7-263	501157010109	底梁挡块	bottom beam	
147	M7G7-634	502201010012	冷冻风道泡沫	air channel foam	
148	M7G7-136	501157010005	变温室风门罩	variable temperature compartment throttle mask	
149	/	502500200067	十字槽扁圆头自攻螺钉	screw	
150	M7G7-633	501157010112	冷冻风道盖板	air channel	
151	/	502500200067	十字槽扁圆头自攻螺钉	screw	

152	501159010007	501159010007	接水漏斗	funnel	
153	M7G7-628	501157010121	制冰机探冰杆	im lever	
154	M7G7-629	501157010122	制冰机限位	im limit	
155	M7G7-625	501157010120	制冰机吊架	im hanging frame	
156	M7G7-642	501157010126	制冰机挂钮	im hanging button	
157	/	502500200067	十字槽扁圆头自攻螺钉	screw	
158	M7G7-1A8	501157010132	右果菜盒组件	right crisper assembly	
159	M7G7-631	501157010123	制冰机制冰格框架	im tray frame	
160	M7G7-621	501157010124	扭转制冰格	im rotation tray	
161	M7G7-175	501157010125	制冰机制冰格框架盖	im tray frame cover	
162	M7G7-1G4	501157010080	冷冻下抽屉挡块	drawer block	
163	M7G7-1F2	501157010108	冷冻下抽屉	F bottom drawer	
164	M7G7-1F3	501257010007	下抽屉加强铁	bottom drawer reinforce iron	
165	M7G7-1F4	501157010065	冷冻下抽屉隔板	separated plate	
166	M7G7-375	501157010088	冷冻抽屉同步齿轮	F drawer synchronous gear	
167	M7G7-376	501257010013	冷冻同步齿轮连接杆	F synchronous gear connect pole	
168	M7G7-374-2	501257010029	冷冻右滑轨组件	slide rail	
169	M7G7-1E7	501157010079	冷冻上抽屉隔板	/	
170	M7G7-1E6	501157010110	冷冻上抽屉	F upper drawer	
171	M7G7-374-1	501257010030	冷冻左滑轨组件	slide rail	
172	M7G7-1E9	501157010077	储冰盒	ice storage box	
173	M7G7-378	501157010010	冷冻门开关挡块	F door switch block	
174	M7G7-377	501257010006	冷冻抽屉左支撑件	F drawer left bracket	
175	M7G7-342	501157010135	冷冻下门封组件	F bottom door seal assembly	
176	/	503700113154	冷冻下门预装	F door assembly	
177	M7G7-1F1	501157010046	冰铲	ice spoon	
178	M7G7-379	501257010005	冷冻抽屉右支撑件	F drawer right bracket	
179	/	502500300074	六角法兰面自攻螺钉	screw	
180	/	502500200067	十字槽扁圆头自攻螺钉	screw	
181	M7G7-343	501157010117	冷冻上门封组件	F upper door seal assembly	
182	/	503700113000	冷冻上门体预装	F door assembly	
183	M7G7-372	502908010021	冷冻把手组件	F door handle	
184	/	502500300074	六角法兰面自攻螺钉	screw	
185	M7G7-316	501157010033	左关门止挡	left door close stopper	

186	/	502501200010	十字槽螺钉	screw assembly	
187	M7G7-315	501257010011	左开门止挡	left door open stopper	

The logo for 'Premium' is located in the bottom right corner of the page. It features the word 'Premium' in a bold, serif font, enclosed within a white oval shape. The oval has a thin black border and a slight shadow effect, giving it a three-dimensional appearance. The background of the entire page is white, with a light gray wavy shape at the top and a dark gray horizontal band at the bottom containing the logo and text.

Premium

Manual de uso y cuidado
Precauciones importantes

Este producto es para uso doméstico únicamente.